
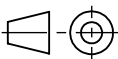
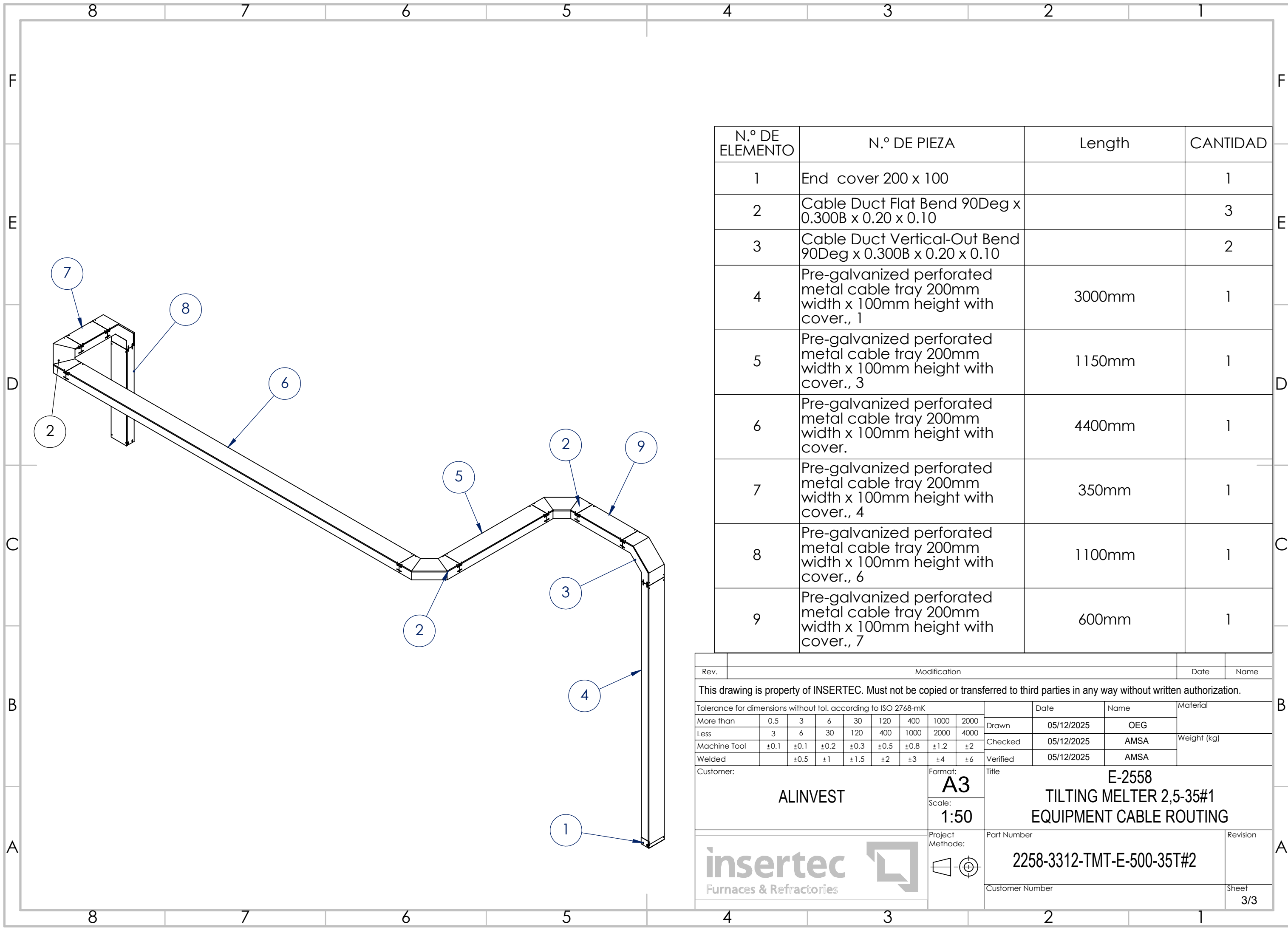

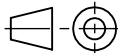


N.º DE ELEMENTO	N.º DE PIEZA	Length	CANTIDAD
1	End cover 200 x 60		1
2	Flat curve 90Deg 200 x 60 R100mm		2
3	Pre-galvanized perforated metal cable tray 200mm width x 60mm height with cover., 2	8170mm	1
4	Pre-galvanized perforated metal cable tray 200mm width x 60mm height with cover., 1	5740mm	1
5	Pre-galvanized perforated metal cable tray 200mm width x 60mm height with cover., 4	470mm	1

Rev.	Modification								Date	Name		
This drawing is property of INSERTEC. Must not be copied or transferred to third parties in any way without written authorization.												
Tolerance for dimensions without tol. according to ISO 2768-mK										Date	Name	Material
More than	0.5	3	6	30	120	400	1000	2000	Drawn	05/12/2025	OEG	Weight (kg)
Less	3	6	30	120	400	1000	2000	4000	Checked	05/12/2025	AMSA	
Machine Tool	±0.1	±0.1	±0.2	±0.3	±0.5	±0.8	±1.2	±2	Verified	05/12/2025	AMSA	
Welded		±0.5	±1	±1.5	±2	±3	±4	±6				
Customer:							Format:		Title			
ALINVEST							A3		E-2558 TILTING MELTER 2,5-35#1 EQUIPMENT CABLE ROUTING			
							Scale:					
 Furnaces & Refractories							Project Methode:		Part Number			Revision
									2258-3312-TMT-E-500-35T#2			
									Customer Number			Sheet
										2/3		



N.º DE ELEMENTO	N.º DE PIEZA	Length	CANTIDAD
1	End cover 200 x 100		1
2	Cable Duct Flat Bend 90Deg x 0.300B x 0.20 x 0.10		3
3	Cable Duct Vertical-Out Bend 90Deg x 0.300B x 0.20 x 0.10		2
4	Pre-galvanized perforated metal cable tray 200mm width x 100mm height with cover., 1	3000mm	1
5	Pre-galvanized perforated metal cable tray 200mm width x 100mm height with cover., 3	1150mm	1
6	Pre-galvanized perforated metal cable tray 200mm width x 100mm height with cover.	4400mm	1
7	Pre-galvanized perforated metal cable tray 200mm width x 100mm height with cover., 4	350mm	1
8	Pre-galvanized perforated metal cable tray 200mm width x 100mm height with cover., 6	1100mm	1
9	Pre-galvanized perforated metal cable tray 200mm width x 100mm height with cover., 7	600mm	1

Rev.	Modification								Date	Name			
This drawing is property of INSERTEC. Must not be copied or transferred to third parties in any way without written authorization.													
Tolerance for dimensions without tol. according to ISO 2768-mK										Date	Name	Material	
More than	0.5	3	6	30	120	400	1000	2000	Drawn	05/12/2025	OEG		
Less	3	6	30	120	400	1000	2000	4000	Checked	05/12/2025	AMSA	Weight (kg)	
Machine Tool	±0.1	±0.1	±0.2	±0.3	±0.5	±0.8	±1.2	±2	Verified	05/12/2025	AMSA		
Welded		±0.5	±1	±1.5	±2	±3	±4	±6					
Customer:							Format:		Title E-2558 TILTING MELTER 2,5-35#1 EQUIPMENT CABLE ROUTING				
ALINVEST							A3						
							Scale:						
							1:50						
							Project Method:		Part Number				Revision
									2258-3312-TMT-E-500-35T#2				
							Customer Number				Sheet 3/3		